

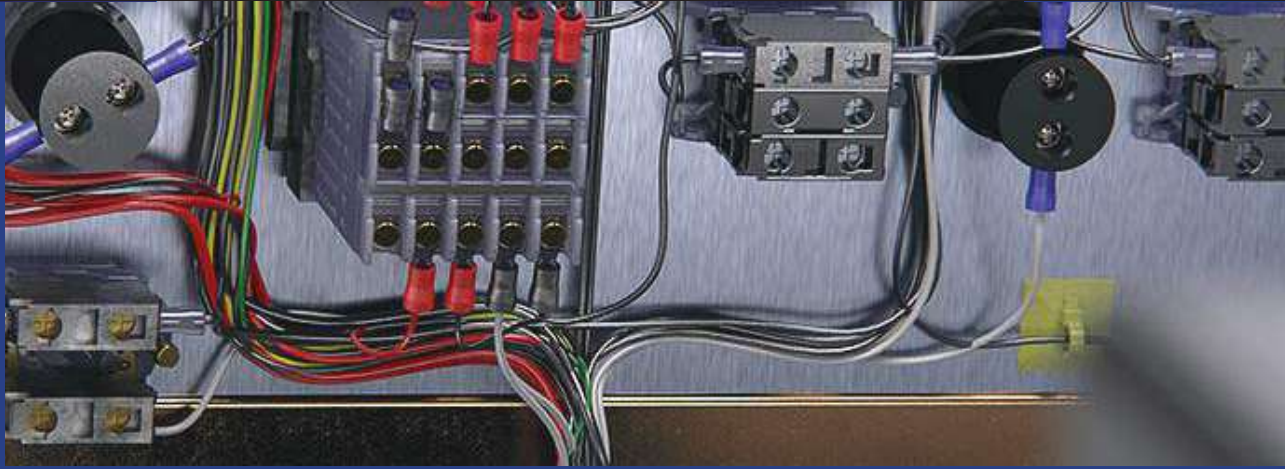
# ELECTRICAL ENGINEERING

(International Program)

## ELECTRICAL POWER MAJOR

### PROGRAM OVERVIEW

Electrical engineering basically involves the generation, storage and use of electricity, furthermore the transmission, distribution, and transformation of electrical energy. Also trends in emerging technologies such as electric vehicle, railway electrification system, renewable energy, smart grids are supplementarily provided in this program. Through the hands-on practicing and guidance, students will learn great deal about being a handy electrical power engineer. Apart from the technical knowledge, soft skills are required to be an outstanding engineer such as creativity, communication, and collaboration skills in problem-based learning are also provided.



# ELECTRICAL ENGINEERING

(International Program)

## ELECTRICAL POWER MAJOR

### Sample Courses

#### Sample Courses

- Electrical Machines and Drives
- Electrical System Design
- Power Electronics
- Electrical Power Systems
- High Voltage Engineering
- Power System Protection
- Power System Analysis
- Renewable Energy, Energy Management
- Selective Topics in Emerging Technologies



#### Tuition Fee

The tuition fee:  
90,000.00 THB per semester

# ELECTRICAL ENGINEERING

(International Program)  
ELECTRICAL POWER MAJOR

## Career Opportunities

Electrical engineers have played a major role in the development of technological advances such as nationwide electrical power, hybrid cars, alternative energy sources, monitoring and control systems. There are lots of career opportunities since electrical power is the most versatile in our daily life. Hence, electrical power engineers can work or run their own business in factories, testing, maintenance and management in electrical infrastructure, power plants, etc. Graduated students are eligible to be professional engineers and broaden their career opportunities.

## Admission Requirements

Educational background

- Graduated or studying in Matthayom 6 or Grade 12 or equivalent as approved by the Ministry of Education before the start of Academic Year 2021.

Academic Records

- School letter : cumulative GPA in high school in the class rank of 75th percentile.
- SAT general test or GSAT score of 1020 or higher
- Test score or qualification that the admission committee considers equivalent to one of the above

English Language Requirement (for non-native English speakers)

English Proficiency Test	Minimum Score
TOEFL – paper-based	550
TOEFL – CBT	213
TOEFL – IBT	79
IELTS	6.0
Cambridge English Exams FCE or CAE or CPE	170
IB – English A1 or A2	4
IB – English B (HL)	5
KMITL-TEP	B2

Personal Statement

- (Demonstrates your ability your related experience)

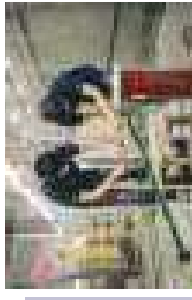
Two Recommendation Letters

- (from your advisors or teachers)



## Partners

Electrical engineering department has a strong relationship with industries through real project-based funding. Still, we are seeking for international partnerships to ensure that students would gain the highest benefits from these collaborations.



## Contact Us

School of International & Interdisciplinary Engineering Programs  
King Mongkut's Institute of Technology Ladkrabang  
Address : HM Building, Faculty of Engineering  
King Mongkut's Institute of Technology.  
No.1, Soi Chalong Krung 1, Ladkrabang district, Bangkok,10520  
Tel : (+66)2329-8000 Ex 5045  
E-mail : [sie@kmitl.ac.th](mailto:sie@kmitl.ac.th)  
Line : @siete\_kmitl